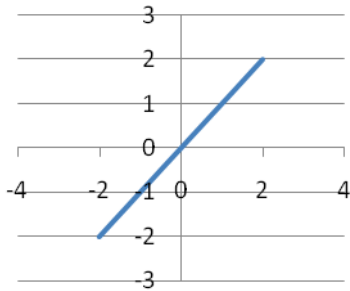


TIPOS DE FUNCIONES

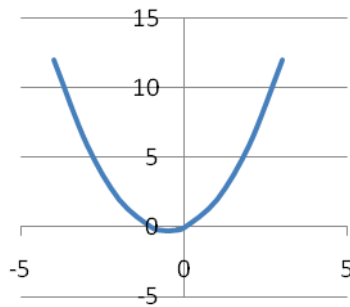
$$y=f(x)$$

$$F(x) = ax + b$$



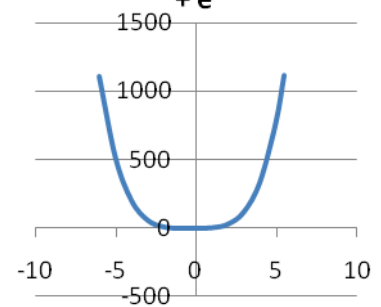
LINEAL (Recta)

$$F(x) = ax^2 + bx + c$$



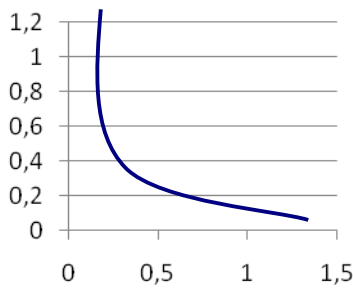
CUADRÁTICA (Parábola)

$$F(x) = ax^4 + bx^3 + cx^2 + dx + e$$



POLINÓMICA

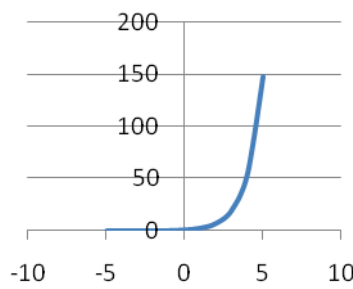
$$F(x) = p(x)/q(x)$$



RACIONAL

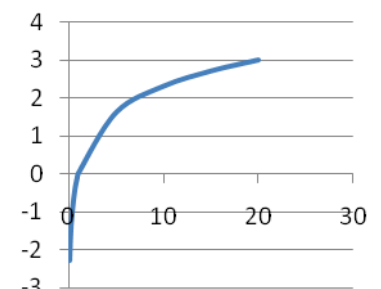
(prop. inversa, $1/x$, Hipérbola)

$$F(x) = e^x$$



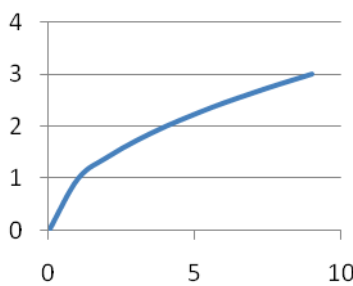
EXPONENCIAL

$$F(x) = \ln x$$



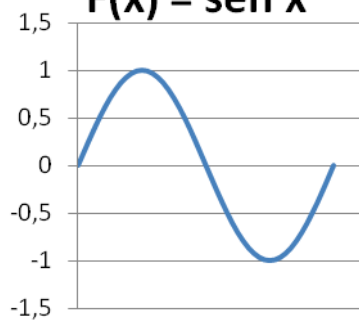
LOGARÍTMICA

$$F(x) = \sqrt{x}$$



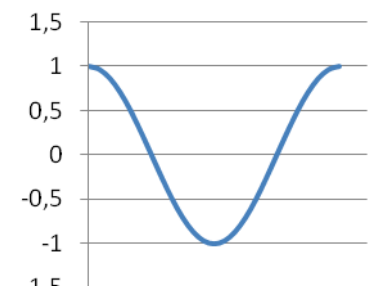
IRRACIONAL

$$F(x) = \text{sen } x$$



SENO (Sinusoide)

$$F(x) = \text{cos } x$$



COSENO (Cosinusoide)